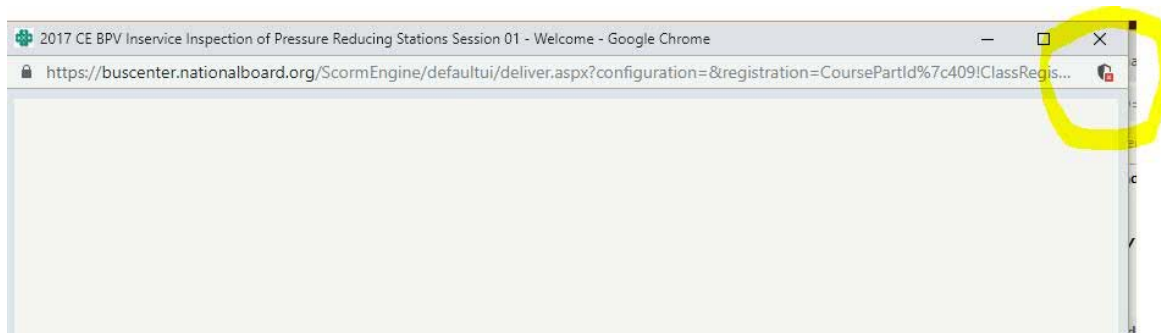
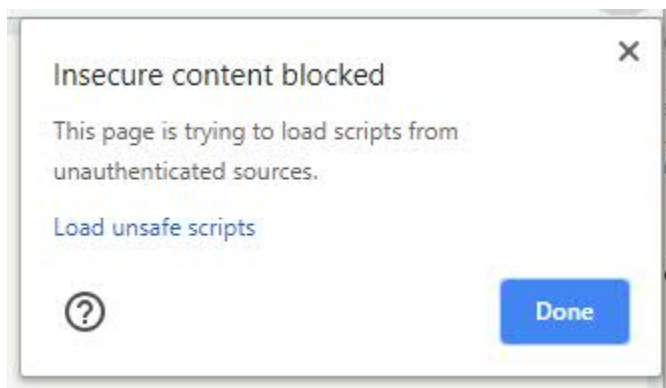


Launching NB Course in the Google Chrome browser (4 Steps)

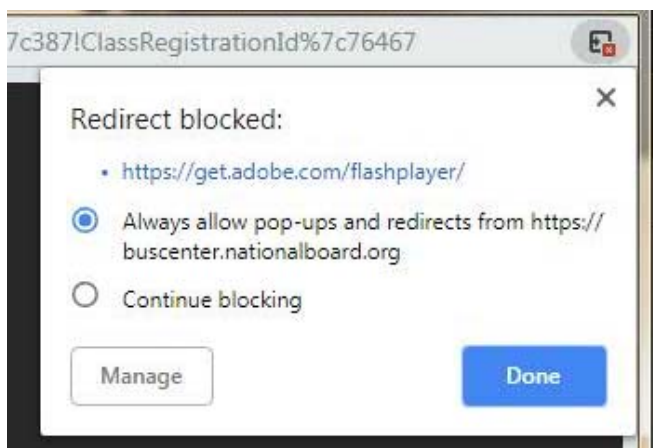
1. Click the shield icon with red X.



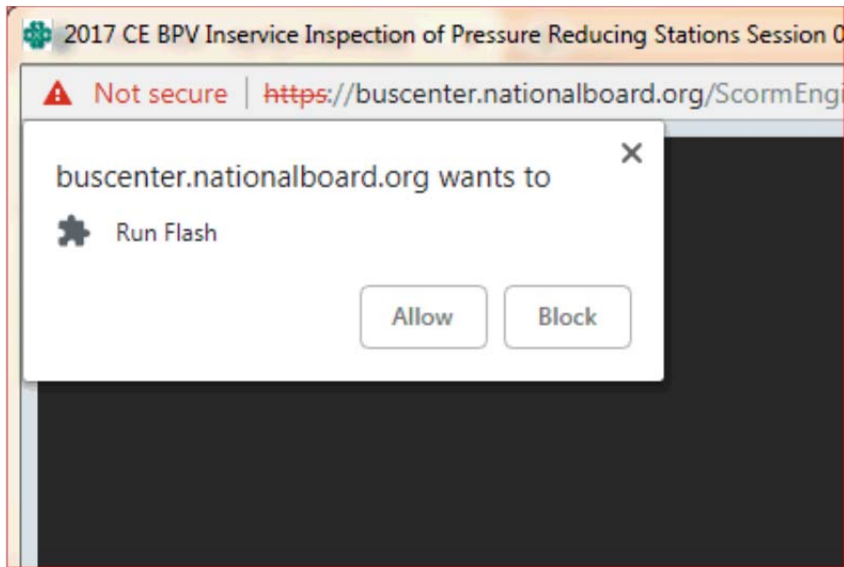
2. Click the Load Unsafe Scripts link. *****This is only because Chrome is blocking our courses' flash player object from running. It is not truly unsafe.**



3. Click Always allow pop-ups and redirects from <https://buscenter.nationalboard.org> *****This step may be skipped**



4. Click the Allow button



This should not need to be done again on a computer or every time you launch a course.